

Spring connection with PUSH IN technology (A-Series)
Feed-through terminal blocks

Universal range

A

A2C 95/120 DM

95 mm²



A2T 1.5

1.5 mm²



Width/Height/Depth	mm
max. current / max. cond. cross-section	A/mm ²
Max. clamping range	mm ²

25 x 133.5 x 90	
232 / 120	
25...120	

3.5 x 84 x 45	
16 / 1.5	
0.14...1.5	

Technical data

Rated data	
Rated voltage	V
Rated current	A
for wire cross-section	mm ²
Rated impulse withstand voltage / Pollution severity	
Gauge to IEC 60947-1 / UL 94 flammability rating	
Approvals	
Clamped conductors (H05V/H07V)	
Solid / Stranded	mm ²
Flexible / Flexible with ferrule	mm ²
Stripping length / Blade size	mm/-
Note	

IEC 60947-7-1			
IEC	UL	CSA	EN 60079-7
1000			
232			
95			
	/ 3		
	/ V-0		
CE			
Rated connection			
25...120 / 25...120			
25...120 / 25...95			
30 / 1.0 x 5.5 mm			

IEC 60947-7-1				Ex eb II C Gb	
IEC	UL	CSA	EN 60079-7		
500	300	300	440		
16	13	13	13.5		
1.5	AWG 26...14	AWG 26...14	1.5 mm ²		
6 kV / 3					
A1 / V-0					
TUEV16ATEX7909U					
Rated connection					
0.5...1.5 / 0.5...1.5					
0.5...1.5 / 0.5...1					
8 / 0.4 x 2.0 mm					

Ordering data

Version	
	dark beige
	Blue
Note	

Type	Qty.	Order No.
A2C 95/120-DM	5	2694150000
A2C 95/120 BL-DM	10	2694160000

Type	Qty.	Order No.
A2T 1.5	50	2469370000
A2T 1.5 BL	50	2471430000

Accessories

Plug-in cross-connection	
	2-pole
	10-pole
End plate	
	dark beige
	Blue
End bracket	
	dark beige, screwable
	dark beige, direct mounting
Test adapter	
	1-pole stackable
Test plug	
Screwdriver	
	Standard
Marking tags	
Cross connections insertable	
	2-pole
	3-pole
Additional tap	
	dark beige
	blue
	black/yellow
	green/yellow
Warning labels	
For detailed information on other accessories and application in the online catalogue	

Type	Qty.	Order No.
ATPG 1.5-10 L	0.2 A 50	1991890000
PS 2.0 MC	20	0310000000
SDS 1.0X5.5X150	1	2749380000
WS-A 8/16 MM WS	200	2619910000
ZQV 95/120N/2	232 A 10	2694250000
ZQV 95/120N/3	232 A 10	2694260000
AAC 50-185 2X10	57 A 5	2663420000
AAC 50-185 2X10 BL	57 A 5	2663430000
AAC 50-185 2X10 BK-YL	57 A 5	2663450000
AAC 50-185 2X10 GN-YL	5	2663440000
AAM 35-185 YE FLASH	40	2635600000

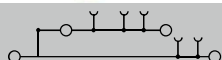
Type	Qty.	Order No.
ZQV 1.5N/2	17.5 A 60	1985410000
ZQV 1.5N/10	17.5 A 20	1985580000
AEP 2T 1.5	20	2469420000
AEP 2T 1.5 BL	20	2471470000
AEB 35 SC/1	50	1991920000
AEB 35 SCL/1 V0	20	2661280000
ATPG 1.5-10 L	0.2 A 50	1991890000
ATPG 1.5 MHR	0.2 A 50	1991880000
PS 2.0 MC	20	0310000000
SDS 0.4X2.0X60	1	2749260000
WS 10/3.5 PLUS MC NE WS	960	2003760000
DEK 5/3.5 MM WS	1000	2007100000
WS 8/3.5 MM WS	1000	2007140000
DEK 5/3.5 PLUS MC NE WS	1600	2003750000
SNAPMARK 1.5	40	2682080000

A2T 1.5 VL

1.5 mm²



3.5 x 84 x 45
16 / 1.5
0.14...1.5



IEC 60947-7-1 Ex eb II C Gb II 2 G D

IEC	UL	CSA	EN 60079-7
500	300	300	440
16	13	13	13.5
1.5	AWG 26...14	AWG 26...14	1.5 mm ²

6 kV / 3
A1 / V-0

TUEV16ATEX7909U

Rated connection

0.5...1.5 / 0.5...1.5
0.5...1.5 / 0.5...1
8 / 0.4 x 2.0 mm

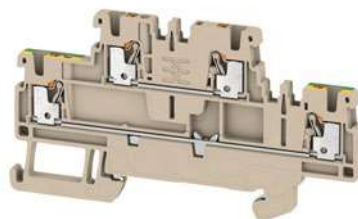
Type	Qty.	Order No.
A2T 1.5 VL	50	2469400000
A2T 1.5 VL BL	50	2471450000

Type	Qty.	Order No.
ZQV 1.5N/2	17.5 A 60	1985410000
ZQV 1.5N/10	17.5 A 20	1985580000
AEP 2T 1.5	20	2469420000
AEP 2T 1.5 BL	20	2471470000
AEB 35 SC/1	50	1991920000
AEB 35 SCL/1 VO	20	2661280000
ATPG 1.5-10 L	0.2 A 50	1991890000
ATPG 1.5 MI-R	0.2 A 50	1991880000
PS 2.0 MC	20	0310000000
SDS 0.4X2.0X60	1	2749260000
WS 10/3.5 PLUS MC NE WS	960	2003760000
DEK 5/3.5 MM WS	1000	2007100000
WS 8/3.5 MM WS	1000	2007140000
DEK 5/3.5 PLUS MC NE WS	1600	2003750000

SNAPMARK 1.5 40 2682080000

A2T 1.5 FT-PE

1.5 mm²



3.5 x 84 x 45
16 / 1.5
0.14...1.5



IEC 60947-7-1, IEC 60947-7-2 Ex eb II C Gb II 2 G D

IEC	UL	CSA	EN 60079-7
500	300	300	440
16	13	13	13.5
1.5	AWG 26...14	AWG 26...14	1.5 mm ²

6 kV / 3
A1 / V-0

TUEV16ATEX7909U

Rated connection

0.5...1.5 / 0.5...1.5
0.5...1.5 / 0.5...1
8 / 0.4 x 2.0 mm

Type	Qty.	Order No.
A2T 1.5 FT-PE	50	2469390000

Type	Qty.	Order No.
ZQV 1.5N/2	17.5 A 60	1985410000
ZQV 1.5N/10	17.5 A 20	1985580000
AEP 2T 1.5	20	2469420000
AEP 2T 1.5 BL	20	2471470000
AEB 35 SC/1	50	1991920000
AEB 35 SCL/1 VO	20	2661280000
ATPG 1.5-10 L	0.2 A 50	1991890000
ATPG 1.5 MI-R	0.2 A 50	1991880000
PS 2.0 MC	20	0310000000
SDS 0.4X2.0X60	1	2749260000
WS 10/3.5 PLUS MC NE WS	960	2003760000
DEK 5/3.5 MM WS	1000	2007100000
WS 8/3.5 MM WS	1000	2007140000
DEK 5/3.5 PLUS MC NE WS	1600	2003750000

SNAPMARK 1.5 40 2682080000



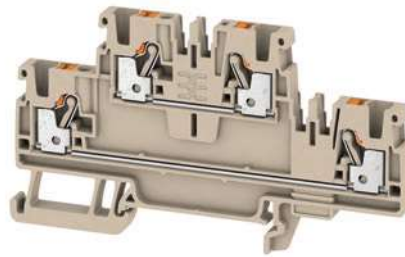
Spring connection with PUSH IN technology (A-Series)
Feed-through terminal blocks

Universal range

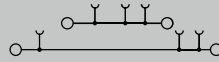
A

A2T 2.5

2.5 mm²



5.1 x 90 x 50.5
24 / 2.5
0.14...2.5

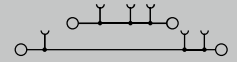


A2T 2.5 SNAPMARK

2.5 mm²



5.1 x 90 x 69
24 / 2.5
0.14...2.5



Width/Height/Depth mm
 max. current / max. cond. cross-section A/mm²
 Max. clamping range mm²

Technical data

Rated data	
Rated voltage	V
Rated current	A
for wire cross-section	mm ²
Rated impulse withstand voltage / Pollution severity	
Gauge to IEC 60947-1 / UL 94 flammability rating	
Approvals	
Clamped conductors (H05V/H07V)	
Solid / Stranded	mm ²
Flexible / Flexible with ferrule	mm ²
Stripping length / Blade size	mm/-
Note	

Ordering data

Version	
	dark beige
	Blue
Note	

Accessories

Plug-in cross-connection	
	2-pole
	10-pole
	2-pole
	10-pole
End plate	
	dark beige
	blue
End bracket	
	dark beige, screwable
	dark beige, direct mounting
Test adapter	
	1-pole
	stackable
	3-pole
	5-pole
Test plug	
Screwdriver	
	Standard
Marking tags	

IEC 60947-7-1

IEC	UL	CSA	EN 60079-7
800	600	600	550
24	20	20	21
2.5	AWG 28...12	AWG 28...12	2.5 mm ²
8 kV / 3			
A3 / V-0			

Ex eb II C Gb II 2 G D

TUEV16ATEX7909U

Rated connection	
0.5...2.5 / 0.5...2.5	mm ²
0.5...2.5 / 0.5...2.5	mm ²
10 / 0.6 x 3.5 mm	mm/-

Type	Qty.	Order No.
A2T 2.5	50	1547610000
A2T 2.5 BL	50	1547620000

Type	Qty.	Order No.
ZQV 2.5N/2	24 A 60	1527540000
ZQV 2.5N/10	24 A 20	1527690000
AEP 2T 2.5	20	1547690000
AEP 2T 2.5 BL	20	1547700000
AEB 35 SC/1	50	1991920000
AEB 35 SCL/1 V0	20	2661280000
ATPG 1.5-10 L	0.2 A 50	1991890000
ATPG 2.5 MHR	0.2 A 50	1991960000
ATPG 2.5/3	0.2 A 25	2041190000
ATPG 2.5/5	0.2 A 25	2041180000
PS 2.0 MC	20	0310000000
SDIL 0,6X3,5X100	1	2749140000
DEK 5/5 PLUS MC NE WS	1000	1854490000
DEK 5/5 MM WS	800	2007110000
WS 8/5 MM WS	800	2007150000
WS 10/5 M PLUS MC NE WS	600	2003770000
SNAPMARK I	50	1805880000

IEC 60947-7-1

IEC	UL	CSA	EN 60079-7
800	600	600	
24	20	20	
2.5	AWG 28...12	AWG 28...12	
8 kV / 3			
A3 / V-0			

CE

Rated connection	
0.5...2.5 / 0.5...2.5	mm ²
0.5...2.5 / 0.5...2.5	mm ²
10 / 0.6 x 3.5 mm	mm/-

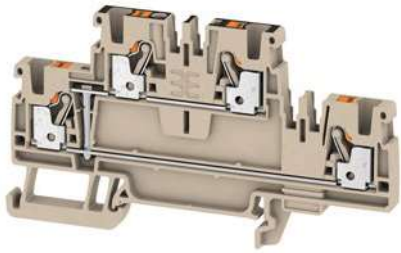
Type	Qty.	Order No.
A2T 2.5 SNAPMARK	50	2581250000
A2T 2.5 SNAPMARK BL	50	2581280000

Type	Qty.	Order No.
ZQV 2.5N/2	24 A 60	1527540000
ZQV 2.5N/10	24 A 20	1527690000
AEP 3T 2.5	20	2428560000
AEP 3T 2.5 BL	20	2428860000
AEB 35 SC/1	50	1991920000
AEB 35 SCL/1 V0	20	2661280000
ATPG 1.5-10 L	0.2 A 50	1991890000
ATPG 2.5 MHR	0.2 A 50	1991960000
ATPG 2.5/3	0.2 A 25	2041190000
ATPG 2.5/5	0.2 A 25	2041180000
PS 2.0 MC	20	0310000000
SDIL 0,6X3,5X100	1	2749140000
DEK 5/5 PLUS MC NE WS	1000	1854490000
DEK 5/5 MM WS	800	2007110000
WS 8/5 MM WS	800	2007150000
WS 10/5 M PLUS MC NE WS	600	2003770000

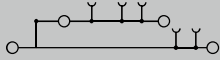
For detailed information on other accessories and application in the online catalogue

A2T 2.5 VL

2.5 mm²



5.1 x 90 x 50.5
24 / 2.5
0.14...2.5



IEC 60947-7-1 Ex eb II C Gb **Ex** II 2 G D

IEC	UL	CSA	EN 60079-7
800	600	600	550
24	20	20	21
2.5	AWG 28...12	AWG 28...12	2.5 mm ²

8 kV / 3
A3 / V-0

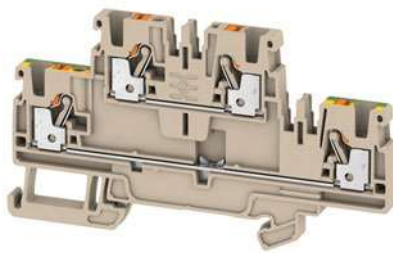
TUEV16ATEX7909U

Rated connection

0.5...2.5 / 0.5...2.5
0.5...2.5 / 0.5...2.5
10 / 0.6 x 3.5 mm

A2T 2.5 FT-PE

2.5 mm²



5.1 x 90 x 50.5
24 / 2.5
0.14...2.5



IEC 60947-7-1, IEC 60947-7-2 Ex eb II C Gb **Ex** II 2 G D

IEC	UL	CSA	EN 60079-7
800	600	600	550
24	20	20	21
2.5	AWG 28...12	AWG 28...12	2.5 mm ²

8 kV / 3
A3 / V-0

TUEV16ATEX7909U

Rated connection

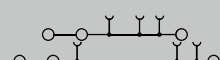
0.5...2.5 / 0.5...2.5
0.5...2.5 / 0.5...2.5
10 / 0.6 x 3.5 mm

A2T 2.5 3C

2.5 mm²



5.1 x 114.5 x 64
22 / 2.5
0.14...2.5



IEC 60947-7-1 Ex eb II C Gb **Ex** II 2 G D

IEC	UL	CSA	EN 60079-7
800	300		550
22	20		19
2.5	AWG 28...12		2.5 mm ²

8 kV / 3
A3 / V-0

TUEV16ATEX7909U

Rated connection

0.5...2.5 / 0.5...2.5
0.5...2.5 / 0.5...2.5
10 / 0.6 x 3.5 mm

Type	Qty.	Order No.
A2T 2.5 VL	50	1547650000
A2T 2.5 VL BL	50	1547660000

Type	Qty.	Order No.
A2T 2.5 FT-PE	50	1547640000

Type	Qty.	Order No.
A2T 2.5 3C	50	2531290000
A2T 2.5 3C BL	50	2531510000

Type	Qty.	Order No.
ZQV 2.5N/2	24 A 60	1527540000
ZQV 2.5N/10	24 A 20	1527690000

Type	Qty.	Order No.
ZQV 2.5N/2	24 A 60	1527540000
ZQV 2.5N/10	24 A 20	1527690000

Type	Qty.	Order No.
ZQV 2.5N/2	24 A 60	1527540000
ZQV 2.5N/10	24 A 20	1527690000

AEP 2T 2.5	20	1547690000
AEP 2T 2.5 BL	20	1547700000

AEP 2T 2.5	20	1547690000
AEP 2T 2.5 BL	20	1547700000

AEP 2T 2.5 3C	20	2532690000
AEP 2T 2.5 3C BL	20	2532700000

AEB 35 SC/1	50	1991920000
AEB 35 SCL/1 VO	20	2661280000

AEB 35 SC/1	50	1991920000
AEB 35 SCL/1 VO	20	2661280000

AEB 35 SC/1	50	1991920000
AEB 35 SCL/1 VO	20	2661280000

ATPG 1.5-10 L	0.2 A 50	1991890000
ATPG 2.5 MI-R	0.2 A 50	1991960000
ATPG 2.5/3	0.2 A 25	2041190000
ATPG 2.5/5	0.2 A 25	2041180000

ATPG 1.5-10 L	0.2 A 50	1991890000
ATPG 2.5 MI-R	0.2 A 50	1991960000
ATPG 2.5/3	0.2 A 25	2041190000
ATPG 2.5/5	0.2 A 25	2041180000

ATPG 1.5-10 L	0.2 A 50	1991890000
ATPG 2.5 MI-R	0.2 A 50	1991960000
ATPG 2.5/3	0.2 A 25	2041190000
ATPG 2.5/5	0.2 A 25	2041180000

PS 2.0 MC	20	0310000000
-----------	----	------------

PS 2.0 MC	20	0310000000
-----------	----	------------

PS 2.0 MC	20	0310000000
-----------	----	------------

SDIL 0,6X3,5X100	1	2749140000
------------------	---	------------

SDIL 0,6X3,5X100	1	2749140000
------------------	---	------------

SDIL 0,6X3,5X100	1	2749140000
------------------	---	------------

DEK 5/5 PLUS MC NE WS	1000	1854490000
DEK 5/5 MM WS	800	2007110000
WS 8/5 MM WS	800	2007150000
WS 10/5 M PLUS MC NE WS	600	2003770000
SNAPMARK I	50	1805880000

DEK 5/5 PLUS MC NE WS	1000	1854490000
DEK 5/5 MM WS	800	2007110000
WS 8/5 MM WS	800	2007150000
WS 10/5 M PLUS MC NE WS	600	2003770000
SNAPMARK I	50	1805880000

DEK 5/5 PLUS MC NE WS	1000	1854490000
DEK 5/5 MM WS	800	2007110000
WS 8/5 MM WS	800	2007150000
WS 10/5 M PLUS MC NE WS	600	2003770000
SNAPMARK I	50	1805880000

Spring connection with PUSH IN technology (A-Series)
Feed-through terminal blocks

Universal range

A

A2T 2.5 3C VL

2.5 mm²

A2T 2.5 3C N-FT

2.5 mm²



Width/Height/Depth	mm
max. current / max. cond. cross-section	A/mm ²
Max. clamping range	mm ²

5.1 x 114.5 x 64	
22 / 2.5	
0.14...2.5	

5.1 x 114.5 x 64	
22 / 2.5	
0.14...2.5	

Technical data

Rated data	
Rated voltage	V
Rated current	A
for wire cross-section	mm ²
Rated impulse withstand voltage / Pollution severity	
Gauge to IEC 60947-1 / UL 94 flammability rating	
Approvals	
Clamped conductors (H05V/H07V)	
Solid / Stranded	mm ²
Flexible / Flexible with ferrule	mm ²
Stripping length / Blade size	mm/-
Note	

IEC 60947-7-1

Ex eb II
C Gb II 2 G D

IEC	UL	CSA	EN 60079-7
800	300		550
22	20		19
2.5	AWG 28...12		2.5 mm ²
8 kV / 3			
A3 / V-0			
			TUEV16ATEX7909U
Rated connection			
0.5...2.5 / 0.5...2.5			
0.5...2.5 / 0.5...2.5			
10 / 0.6 x 3.5 mm			

CE TUEV16ATEX7909U

IEC 60947-7-1

IEC	UL	CSA	EN 60079-7
800			
22			
2.5			
8 kV / 3			
/ V-0			
Rated connection			
0.5...2.5 / 0.5...2.5			
0.5...2.5 / 0.5...2.5			
10 / 0.6 x 3.5 mm			

CE

Ordering data

Version	
	dark beige
	Blue
Note	

Type	Qty.	Order No.
A2T 2.5 3C VL	50	2531310000
A2T 2.5 3C VL BL	50	2531530000

Type	Qty.	Order No.
A2T 2.5 3C N-FT	50	2736830000

Accessories

Plug-in cross-connection	
	2-pole
	10-pole
	2-pole
	10-pole
End plate	
	dark beige
	blue
End bracket	
	dark beige, screwable
	dark beige, direct mounting
Test adapter	
	1-pole
	stackable
	3-pole
	5-pole
Test plug	
Screwdriver	
	Standard
Marking tags	

Type	Qty.	Order No.
ZQV 2.5N/2	24 A 60	1527540000
ZQV 2.5N/10	24 A 20	1527690000
End plate		
AEP 2T 2.5	20	1547690000
AEP 2T 2.5 BL	20	1547700000
End bracket		
AEB 35 SC/1	50	1991920000
AEB 35 SCL/1 V0	20	2661280000
Test adapter		
ATPG 1.5-10 L	0.2 A 50	1991890000
ATPG 2.5 MHR	0.2 A 50	1991960000
ATPG 2.5/3	0.2 A 25	2041190000
ATPG 2.5/5	0.2 A 25	2041180000
Test plug		
PS 2.0 MC	20	0310000000
Screwdriver		
SDIL 0,6X3,5X100	1	2749140000
Marking tags		
DEK 5/5 PLUS MC NE WS	1000	1854490000
DEK 5/5 MM WS	800	2007110000
WS 8/5 MM WS	800	2007150000
WS 10/5 M PLUS MC NE WS	600	2003770000
SNAPMARK I	50	1805880000

Type	Qty.	Order No.
ZQV 2.5N/2	24 A 60	1527540000
ZQV 2.5N/10	24 A 20	1527690000
End plate		
AEP 2T 2.5	20	1547690000
AEP 2T 2.5 BL	20	1547700000
End bracket		
AEB 35 SC/1	50	1991920000
AEB 35 SCL/1 V0	20	2661280000
Test adapter		
ATPG 1.5-10 L	0.2 A 50	1991890000
ATPG 2.5 MHR	0.2 A 50	1991960000
ATPG 2.5/3	0.2 A 25	2041190000
ATPG 2.5/5	0.2 A 25	2041180000
Test plug		
PS 2.0 MC	20	0310000000
Screwdriver		
SDIL 0,6X3,5X100	1	2749140000
Marking tags		
DEK 5/5 PLUS MC NE WS	1000	1854490000
DEK 5/5 MM WS	800	2007110000
WS 8/5 MM WS	800	2007150000
WS 10/5 M PLUS MC NE WS	600	2003770000
SNAPMARK I	50	1805880000

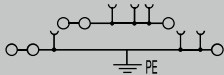
For detailed information on other accessories and application in the online catalogue

A2T 2.5 3C FT-PE

2.5 mm²



5.1 x 114.5 x 64
22 / 2.5
0.14...2.5



Ex eb II
C Gb II 2 G D

IEC 60947-7-1

IEC	UL	CSA	EN 60079-7
800	300		550
22	20		19
2.5	AWG 28...12		2.5 mm ²

8 kV / 3
A3 / V-0



TUEV16ATEX7909U

Rated connection

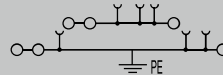
0.5...2.5 / 0.5...2.5
0.5...2.5 / 0.5...2.5
10 / 0.6 x 3.5 mm

A2T 2.5 3C N-PE

2.5 mm²



5.1 x 114.5 x 64
22 / 2.5
0.14...2.5



IEC 60947-7-1

IEC	UL	CSA	EN 60079-7
800			
22			
2.5			

8 kV / 3
A3 / V-0



Rated connection

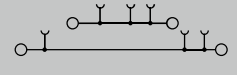
0.5...2.5 / 0.5...2.5
0.5...2.5 / 0.5...2.5
10 / 0.6 x 3.5 mm

A2T 4

4 mm²



6.1 x 100 x 53.5
32 / 4
0.14...4



IEC 60947-7-1

IEC	UL	CSA	EN 60079-7
800	600		550
32	30		25
4	AWG 26...10		4 mm ²

8 kV / 3
A4 / V-0



TUEV16ATEX7909U

Rated connection

0.5...4 / 0.5...4
0.5...4 / 0.5...4
12 / 0.6 x 3.5 mm

Type	Qty.	Order No.
A2T 2.5 3C FT-PE	50	2531300000

Type	Qty.	Order No.
A2T 2.5 3C N-PE	50	2623550000

Type	Qty.	Order No.
A2T 4	50	2539970000
A2T 4 BL	50	2540040000

Type	Qty.	Order No.
ZQV 2.5N/2	24 A 60	1527540000
ZQV 2.5N/10	24 A 20	1527690000
AEP 2T 2.5	20	1547690000
AEP 2T 2.5 BL	20	1547700000
AEB 35 SC/1	50	1991920000
AEB 35 SCL/1 V0	20	2661280000
ATPG 1.5-10 L	0.2 A 50	1991890000
ATPG 2.5 MI-R	0.2 A 50	1991960000
ATPG 2.5/3	0.2 A 25	2041190000
ATPG 2.5/5	0.2 A 25	2041180000
PS 2.0 MC	20	0310000000
SDIL 0,6X3,5X100	1	2749140000
DEK 5/5 PLUS MC NE WS	1000	1854490000
DEK 5/5 MM WS	800	2007110000
WS 8/5 MM WS	800	2007150000
WS 10/5 M PLUS MC NE WS	600	2003770000
SNAPMARK I	50	1805880000

Type	Qty.	Order No.
ZQV 2.5N/2	24 A 60	1527540000
ZQV 2.5N/10	24 A 20	1527690000
AEP 2T 2.5	20	1547690000
AEP 2T 2.5 BL	20	1547700000
AEB 35 SC/1	50	1991920000
AEB 35 SCL/1 V0	20	2661280000
ATPG 1.5-10 L	0.2 A 50	1991890000
ATPG 2.5 MI-R	0.2 A 50	1991960000
ATPG 2.5/3	0.2 A 25	2041190000
ATPG 2.5/5	0.2 A 25	2041180000
PS 2.0 MC	20	0310000000
SDIL 0,6X3,5X100	1	2749140000
DEK 5/5 PLUS MC NE WS	1000	1854490000
DEK 5/5 MM WS	800	2007110000
WS 8/5 MM WS	800	2007150000
WS 10/5 M PLUS MC NE WS	600	2003770000
SNAPMARK I	50	1805880000

Type	Qty.	Order No.
ZQV 4N/2	32 A 60	1527930000
ZQV 4N/10	32 A 20	1528090000
AEP 2T 4	20	2540000000
AEP 2T 4 BL	20	2540010000
AEB 35 SC/1	50	1991920000
AEB 35 SCL/1 V0	20	2661280000
ATPG 1.5-10 L	0.2 A 50	1991890000
ATPG 4 MI-R	0.2 A 50	1991860000
PS 2.0 MC	20	0310000000
SDIL 0,6X3,5X100	1	2749140000
DEK 5/5 PLUS MC NE WS	1000	1854490000
DEK 5/5 MM WS	800	2007110000
WS 8/5 MM WS	800	2007150000
WS 10/5 M PLUS MC NE WS	600	2003770000
SNAPMARK I	50	1805880000



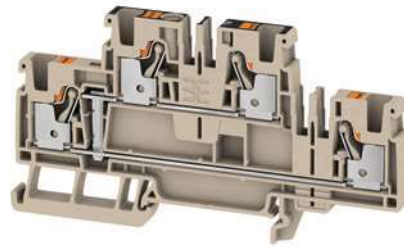
Spring connection with PUSH IN technology (A-Series)
Feed-through terminal blocks

Universal range

A

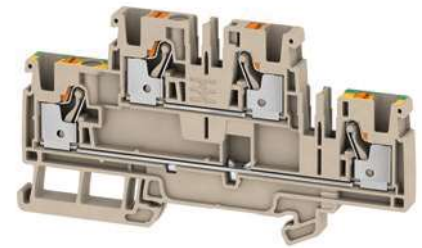
A2T 4 VL

4 mm²



A2T 4 FT-PE

4 mm²



Width/Height/Depth	mm
max. current / max. cond. cross-section	A/mm ²
Max. clamping range	mm ²

6.1 x 100 x 53.5	
32 / 4	
0.14...4	

6.1 x 100 x 53.5	
32 / 4	
0.14...4	

Technical data

Rated data	
Rated voltage	V
Rated current	A
for wire cross-section	mm ²
Rated impulse withstand voltage / Pollution severity	
Gauge to IEC 60947-1 / UL 94 flammability rating	
Approvals	
Clamped conductors (H05V/H07V)	
Solid / Stranded	mm ²
Flexible / Flexible with ferrule	mm ²
Stripping length / Blade size	mm/-
Note	

IEC 60947-7-1			
IEC	UL	CSA	EN 60079-7
800	600		550
32	30		25
4	AWG 26...10		4 mm ²
8 kV / 3			
A4 / V-0			
TUEV16ATEX7909U			
Rated connection			
0.5...4 / 0.5...4			
0.5...4 / 0.5...4			
12 / 0.6 x 3.5 mm			
Note			

IEC 60947-7-1, IEC 60947-7-2			
IEC	UL	CSA	EN 60079-7
800	600		550
32	30		25
4	AWG 26...10		4 mm ²
8 kV / 3			
A4 / V-0			
TUEV16ATEX7909U			
Rated connection			
0.5...4 / 0.5...4			
0.5...4 / 0.5...4			
12 / 0.6 x 3.5 mm			
Note			

Ordering data

Version	
	dark beige
	Blue
Note	

Type	Qty.	Order No.
A2T 4 VL	50	2540020000
A2T 4 VL BL	50	2540030000
Note		

Type	Qty.	Order No.
A2T 4 FT-PE	50	2539980000
Note		

Accessories

Plug-in cross-connection	
	2-pole
	10-pole
	2-pole
	10-pole
End plate	
	dark beige
	blue
End bracket	
	dark beige, screwable
	dark beige, direct mounting
Test adapter	
	1-pole
	stackable
	3-pole
	5-pole
Test plug	
Screwdriver	
	Standard
Marking tags	

Type	Qty.	Order No.
ZQV 4N/2	32 A 60	1527930000
ZQV 4N/10	32 A 20	1528090000
AEP 2T 4	20	2540000000
AEP 2T 4 BL	20	2540010000
AEB 35 SC/1	50	1991920000
AEB 35 SCL/1 VO	20	2661280000
ATPG 1.5-10 L	0.2 A 50	1991890000
ATPG 4 M-R	0.2 A 50	1991860000
PS 2.0 MC	20	0310000000
SDIL 0,6X3,5X100	1	2749140000
DEK 5/5 PLUS MC NE WS	1000	1854490000
DEK 5/5 MM WS	800	2007110000
WS 8/5 MM WS	800	2007150000
WS 10/5 M PLUS MC NE WS	600	2003770000
SNAPMARK I	50	1805880000
Note		

Type	Qty.	Order No.
ZQV 4N/2	32 A 60	1527930000
ZQV 4N/10	32 A 20	1528090000
AEP 2T 4	20	2540000000
AEP 2T 4 BL	20	2540010000
AEB 35 SC/1	50	1991920000
AEB 35 SCL/1 VO	20	2661280000
ATPG 1.5-10 L	0.2 A 50	1991890000
ATPG 4 M-R	0.2 A 50	1991860000
PS 2.0 MC	20	0310000000
SDIL 0,6X3,5X100	1	2749140000
DEK 5/5 PLUS MC NE WS	1000	1854490000
DEK 5/5 MM WS	800	2007110000
WS 8/5 MM WS	800	2007150000
WS 10/5 M PLUS MC NE WS	600	2003770000
SNAPMARK I	50	1805880000
Note		

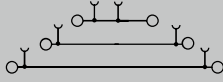
For detailed information on other accessories and application in the online catalogue

A3T 2.5

2.5 mm²



5.1 x 116 x 64.5
22 / 2.5
0.14...2.5



DIN EN 60947-7-1 Ex eb II C Gb **Ex** II 2 G D

IEC	UL	CSA	EN 60079-7
800	300	300	550
22	20	20	19
2.5	AWG 28...12	AWG 28...12	2.5 mm ²

8 kV / 3
A3 / V-0

CE, UL, CSA, TÜV, KEPCO, TÜEV16ATEX7909U

Rated connection
0.5...2.5 / 0.5...2.5
0.5...2.5 / 0.5...2.5
10 / 0.6 x 3.5 mm

Type	Qty.	Order No.
A3T 2.5	50	2428510000
A3T 2.5 BL	50	2428520000

Type	Qty.	Order No.
ZQV 2.5N/2	24 A 60	1527540000
ZQV 2.5N/10	24 A 20	1527690000

AEP 3T 2.5	20	2428560000
AEP 3T 2.5 BL	20	2428860000

AEB 35 SC/1	50	1991920000
AEB 35 SCL/1 VO	20	2661280000

ATPG 1.5-10 L	0.2 A 50	1991890000
ATPG 2.5 MI-R	0.2 A 50	1991960000
ATPG 2.5/3	0.2 A 25	2041190000
ATPG 2.5/5	0.2 A 25	2041180000

PS 2.0 MC	20	0310000000
-----------	----	------------

SDIL 0,6X3,5X100	1	2749140000
------------------	---	------------

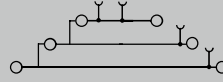
DEK 5/5 PLUS MC NE WS	1000	1854490000
DEK 5/5 MM WS	800	2007110000
WS 8/5 MM WS	800	2007150000
WS 10/5 M PLUS MC NE WS	600	2003770000
SNAPMARK I	50	1805880000

A3T 2.5 VL

2.5 mm²



5.1 x 116 x 64.5
24 / 2.5
0.14...2.5



DIN EN 60947-7-1 Ex eb II C Gb **Ex** II 2 G D

IEC	UL	CSA	EN 60079-7
800	300	300	550
24	20	20	19
2.5	AWG 28...12	AWG 28...12	2.5 mm ²

8 kV / 3
A3 / V-0

CE, UL, CSA, TÜV, KEPCO, TÜEV16ATEX7909U

Rated connection
0.5...2.5 / 0.5...2.5
0.5...2.5 / 0.5...2.5
10 / 0.6 x 3.5 mm

Type	Qty.	Order No.
A3T 2.5 VL	25	2428540000
A3T 2.5 VL BL	25	2428850000

Type	Qty.	Order No.
ZQV 2.5N/2	24 A 60	1527540000
ZQV 2.5N/10	24 A 20	1527690000

AEP 3T 2.5	20	2428560000
AEP 3T 2.5 BL	20	2428860000

AEB 35 SC/1	50	1991920000
AEB 35 SCL/1 VO	20	2661280000

ATPG 1.5-10 L	0.2 A 50	1991890000
ATPG 2.5 MI-R	0.2 A 50	1991960000
ATPG 2.5/3	0.2 A 25	2041190000
ATPG 2.5/5	0.2 A 25	2041180000

PS 2.0 MC	20	0310000000
-----------	----	------------

SDIL 0,6X3,5X100	1	2749140000
------------------	---	------------

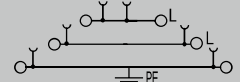
DEK 5/5 PLUS MC NE WS	1000	1854490000
DEK 5/5 MM WS	800	2007110000
WS 8/5 MM WS	800	2007150000
WS 10/5 M PLUS MC NE WS	600	2003770000
SNAPMARK I	50	1805880000

A3T 2.5 FT-FT-PE

2.5 mm²



5.1 x 116 x 64.5
24 / 2.5
0.14...2.5



DIN EN 60947-7-1, DIN EN 60947-7-2 Ex eb II C Gb **Ex** II 2 G D

IEC	UL	CSA	EN 60079-7
800	300	300	550
24	20	20	19
2.5	AWG 28...12	AWG 28...12	2.5 mm ²

8 kV / 3
A3 / V-0

CE, UL, CSA, TÜV, KEPCO, TÜEV16ATEX7909U

Rated connection
0.5...2.5 / 0.5...2.5
0.5...2.5 / 0.5...2.5
10 / 0.6 x 3.5 mm

Type	Qty.	Order No.
A3T 2.5 FT-FT-PE	50	2428530000

Type	Qty.	Order No.
ZQV 2.5N/2	24 A 60	1527540000
ZQV 2.5N/10	24 A 20	1527690000

AEP 3T 2.5	20	2428560000
AEP 3T 2.5 BL	20	2428860000

AEB 35 SC/1	50	1991920000
AEB 35 SCL/1 VO	20	2661280000

ATPG 1.5-10 L	0.2 A 50	1991890000
ATPG 2.5 MI-R	0.2 A 50	1991960000
ATPG 2.5/3	0.2 A 25	2041190000
ATPG 2.5/5	0.2 A 25	2041180000

PS 2.0 MC	20	0310000000
-----------	----	------------

SDIL 0,6X3,5X100	1	2749140000
------------------	---	------------

DEK 5/5 PLUS MC NE WS	1000	1854490000
DEK 5/5 MM WS	800	2007110000
WS 8/5 MM WS	800	2007150000
WS 10/5 M PLUS MC NE WS	600	2003770000
SNAPMARK I	50	1805880000



Spring connection with PUSH IN technology (A-Series)
Feed-through terminal blocks

Universal range

A

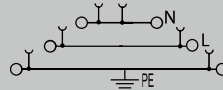
A3T 2.5 N-FT-PE

2.5 mm²



Width/Height/Depth	mm
max. current / max. cond. cross-section	A/mm ²
Max. clamping range	mm ²

5.1 x 116 x 64.5
24 / 2.5
0.14...2.5



Technical data

Rated data	
Rated voltage	V
Rated current	A
for wire cross-section	mm ²
Rated impulse withstand voltage / Pollution severity	
Gauge to IEC 60947-1 / UL 94 flammability rating	
Approvals	
Clamped conductors (H05V/H07V)	
Solid / Stranded	mm ²
Flexible / Flexible with ferrule	mm ²
Stripping length / Blade size	mm/-

DIN EN 60947-7-1, DIN EN 60947-7-2
 Ex eb II C Gb II 2 G D

IEC	UL	CSA	EN 60079-7
800	300	300	550
24	20	20	19
2.5	AWG 28...12	AWG 28...12	2.5 mm ²
8 kV / 3			
A3 / V-0			

TUEV16ATEX7909U

Rated connection	
0.5...2.5 / 0.5...2.5	
0.5...2.5 / 0.5...2.5	
10 / 0.6 x 3.5 mm	

Note

Ordering data

Version	dark beige Blue
Note	

Type	Qty.	Order No.
A3T 2.5 N-FT-PE	50	2428840000

Accessories

Plug-in cross-connection	
	2-pole
	10-pole
	2-pole
	10-pole
End plate	
	dark beige
	blue
End bracket	
	dark beige, screwable
	dark beige, direct mounting
Test adapter	
	1-pole
	stackable
	3-pole
	5-pole
Test plug	
Screwdriver	
	Standard
Marking tags	

Type	Qty.	Order No.
ZQV 2.5N/2	24 A 60	1527540000
ZQV 2.5N/10	24 A 20	1527690000
AEP 3T 2.5		
AEP 3T 2.5	20	2428560000
AEP 3T 2.5 BL	20	2428860000
AEB 35 SC/1		
AEB 35 SC/1	50	1991920000
AEB 35 SCL/1 VO		
AEB 35 SCL/1 VO	20	2661280000
ATPG 1.5-10 L		
ATPG 1.5-10 L	0.2 A 50	1991890000
ATPG 2.5 MHR		
ATPG 2.5 MHR	0.2 A 50	1991960000
ATPG 2.5/3		
ATPG 2.5/3	0.2 A 25	2041190000
ATPG 2.5/5		
ATPG 2.5/5	0.2 A 25	2041180000
PS 2.0 MC		
PS 2.0 MC	20	0310000000
SDIL 0,6X3,5X100		
SDIL 0,6X3,5X100	1	2749140000
DEK 5/5 PLUS MC NE WS		
DEK 5/5 PLUS MC NE WS	1000	1854490000
DEK 5/5 MM WS		
DEK 5/5 MM WS	800	2007110000
WS 8/5 MM WS		
WS 8/5 MM WS	800	2007150000
WS 10/5 M PLUS MC NE WS		
WS 10/5 M PLUS MC NE WS	600	2003770000
SNAPMARK I		
SNAPMARK I	50	1805880000

For detailed information on other accessories and application in the online catalogue